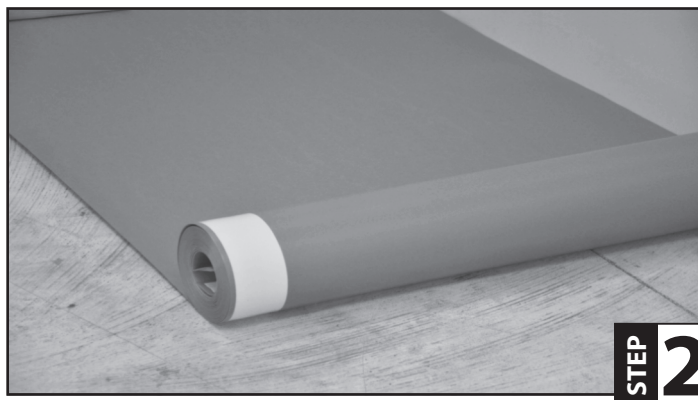


**\*Prior to installation of the underlayment, follow the flooring manufacturer's recommendations and/or instructions concerning site conditions and installation.**


**STEP 1**

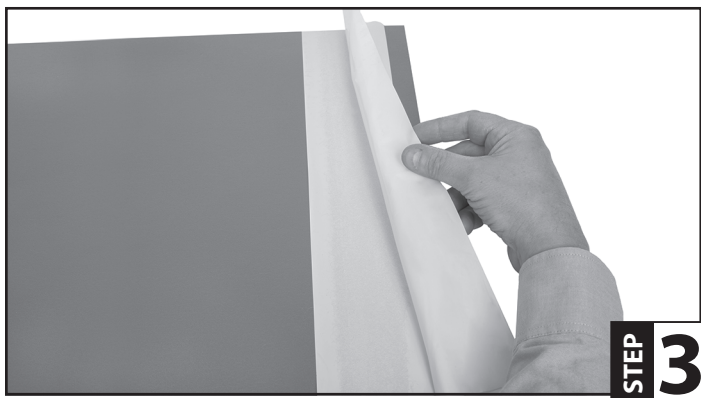
## Step 1:

Make sure the subfloor is structurally sound, level and is free of dust and debris. The deflection cannot exceed  $L/360$  of the span under intended live and dead loads. Check for protruding nails and/or defects in the subfloor. If installing over concrete, the concrete must be dry with moisture emission rates that do not exceed 3lbs. per 1000 square feet per 24 hours as measured by the Anhydrous Calcium Chloride Test.


**STEP 2**

## Step 2:

Start in a corner with tape strip side next to wall and overlapping film toward the open room. Install the ComboFoam® (film side down) parallel to the wall in the opposite direction as you plan to install the flooring planks. When installing the ComboFoam, leave at least 2" going up the wall.


**STEP 3**

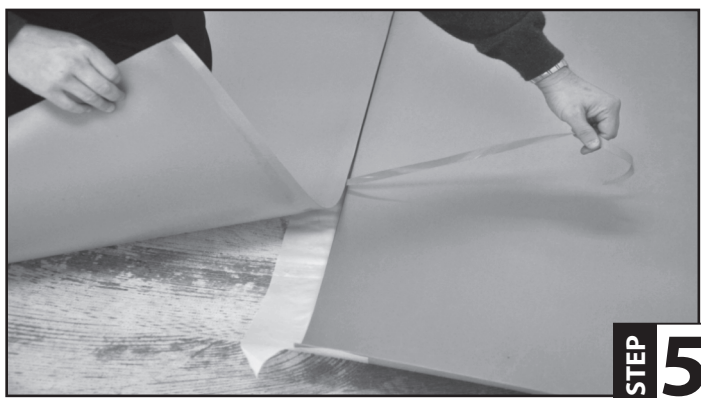
## Step 3:

Be sure to unfold the film, extending it 3" from the foam.


**STEP 4**

## Step 4:

Roll out the next roll of ComboFoam® in the same manner, making sure that the foam seams are butted together. Be sure to overlap only the moisture barrier lip and not the foam pad.


**STEP 5**

## Step 5:

Remove the adhesive liner and adhere the foam to the film overlap.


**STEP 6**

## Step 6:

Install the flooring per the flooring manufacturer's instructions.