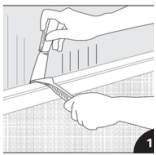


Cornerstone Installation Guidelines

Important information

- Acclimate flooring for 48–72 hours in the installation room. Keep boxes flat and unopened.
- Maintain 18–29°C temperature and 35–55% humidity before, during, and after installation. Ensure HVAC is running.
- Subfloor must be clean, dry, flat, smooth, and free of debris (max variation: 3/16" over 10 ft).
- Use only approved adhesive and follow instructions for spread rate, trowel size, and curing.
- For concrete: test moisture and pH. Install a moisture barrier if required.
- Do not install over carpet, cushion vinyl, or floating floors.
- Undercut door casings and remove baseboards before starting.
- Mix planks from multiple boxes. Stagger end joints by 15–22 inches.
- Roll floor with a 100-lb roller in both directions immediately after install.
- Avoid traffic for 24 hours; no heavy loads for 48–72 hours.
- Inspect all planks during installation. Do not install visibly damaged boards — no claims will be accepted after installation.

General installation instructions.



Remove thresholds and other trim before you measure the room to see how much flooring to purchase. Your surface to cover will be the length times the width of the room plus the area of any nooks and closets. To this total surface area you will need to add around 10 percent for material lost from cutting.



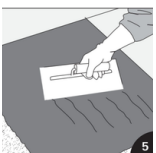
Remove the existing flooring if necessary. If the existing floor surface is suitable, solid and fairly smooth you may be able to skip this step. If you remove carpet or old vinyl, you may need to use a power scraper and citrus-based solvent to remove old adhesive without omitting corners and crevices.



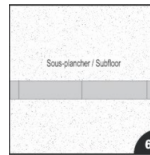
Use a patching compound to fill in any cracks and holes in your subfloor. Work the compound into the hole with a putty knife and level it off. Once you have a smooth, even surface, sweep and mop it thoroughly. The smoother the subfloor, the better vinyl planks will bond to it. Finally, a coat of primer is recommended to seal extremely porous subfloors or difficult to bond surfaces.



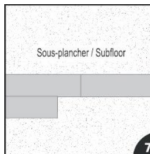
Install planks parallel to the main line of sight, usually the wall opposite the entrance. Find and mark the center of the room, then adjust so planks are evenly spaced on both sides. Use a chalk line or fine marker to mark the center line. Cut the first and last rows if needed to ensure a balanced layout.



Spread the adhesive with the recommended notched trowel. Use only supplier's recommended adhesives and closely follow instructions for their use. Wait the appropriate time according to the manufacturer's directions before commencing to lay flooring.



Starting on your centre line, be very careful to line up the first plank perfectly straight since all the remaining planks will key off the first. Make sure that all planks are laid in the same direction. For this purpose, arrows have been printed on the back layer of the planks.



Cut a plank in half to start the second row. Use a vinyl cutter or utility knife and square to cut at a 90° angle. Stagger planks for a natural look, starting each row with cut-offs from the previous one. Ensure all pieces and staggers are at least 20 cm (8") long.



Use a floor roller to ensure all the planks are firmly bonded to the floor and install mouldings. Locate any gaps between planks; if any, use a putty knife to fill gaps with putty and wipe away any excess.



Should there be adhesive residue on the surface of the floor, use a clean white cloth dampened with water if adhesive is wet and acetone or mineral spirits if it is dry to wipe it away.

Installation Over Radiant Heat.

Cornerstone Vinyl Plank Flooring can be installed over radiant heat if the following guidelines are followed:

- Complete system must be operational for a minimum of one week.
- System should be turned off 72 hours prior to installation of Cornerstone flooring and remain off 72 hours after installation is complete. Turn system back on to its normal room temperature setting.
- The subfloor surface must never exceed 80 degrees Fahrenheit throughout the life of the floor.
- Flooring and adhesive should never come in direct contact with heating system.
- All other standard installation instructions apply.