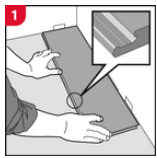


Hydroplank Installation Guidelines

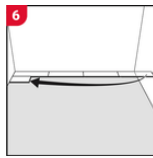
Important information

- Packages must be acclimated for at least 72 hours in the installation room. Do not stack boxes directly on concrete. Keep temperature between 18–29°C (65–85°F) and humidity at 35–55%. Do not open cartons during acclimation.
- Ensure HVAC systems are operational before and during installation.
- Use 3/8" (10 mm) expansion spacers around all walls, doorways, and fixed structures. In rooms over 15 m (50 ft), increase expansion space to 1/2" (12 mm).
- Install over a clean, flat, and dry subfloor. Remove baseboards, thresholds, and undercut door casings as needed.
- Mix planks from multiple boxes to vary color and grain. Avoid placing similar planks next to each other.
- Install with a random staggered layout. End joints should be staggered by at least 15–22 inches, depending on plank length.
- The starting wall should be straight; use a chalk line for alignment. Start each row from the same side with the tongue facing the wall.
- Do not install permanent fixtures (e.g., kitchen islands) on top of the floor.
- All planks must be inspected during installation. Do not install defective planks. Claims for visual defects will not be accepted once installed.

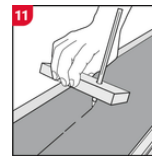
General installation instructions.



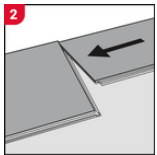
1 First row, first plank
Starting from the left-hand corner, place 3/8" spacers against walls on each side and place the first plank with the groove side facing out.



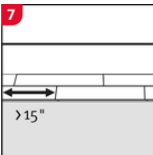
6 Starting the next row
Place 3/8" spacer against the wall and use either the cut part from the last row, or a new plank measuring at least 15" in length.



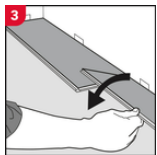
11 First or last row at uneven walls
The first and last rows may need to be trimmed at uneven walls. Scribe the wall line to the plank row as shown, cut and then continue with installation. The last row plank width must be at least 2" wide.



2 First row, second plank
Gently place the second/next plank close to the short end of the first/previous plank.



7 Staggering end joints
The minimum distance between plank end joints in parallel rows must be 15" for plank lengths of 48" to 60" and 22" for plank lengths greater than 72".



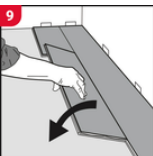
3 Starting from the corner closest to the previous plank, fold down towards the center in a single action.



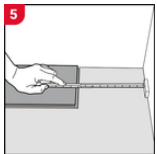
8 Second row, first plank
Place the plank at an angle against the plank in the previous row, inserting it into its groove, pressing forward and folding down at the same time.



4 Press down firmly and listen for the click that means it's locked in place. No tapping is required.



9 Second row, second plank
Gently place the plank close to the short end of the previous plank and fold down in a single action.

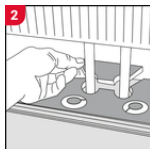
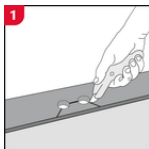


5 End of row
At the end of the first row, place a 3/8" spacer against the wall and measure the length of the last plank to fit. Cut to size and install.



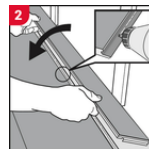
10 After 2-3 rows
As installation proceeds, check that the installed planks are tightly locked and snug against the 3/8" expansion gap spacers on each wall. Remove the spacers once the installation process is complete.

Installation around radiator/heating pipes.



Drill holes two times larger than the diameter of the pipes. Remove a piece of the plank with a utility knife. Position the plank on one side of the pipes and the cut piece on the other side. Glue cut edges together.

When angling is not possible



Remove the vertical locking part of the strip with a chisel. Apply glue on the strip and push the planks together to join them. Ensure that $\frac{3}{8}$ " spacers are between the last plank and the wall to maintain the required expansion gap.

Dismantling planks.

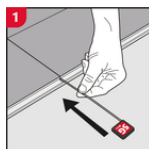


Separate the entire row by carefully lifting up and releasing it. Fold up the row and release the whole long side.

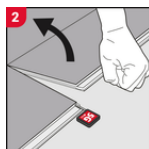


Disassemble each plank by sliding the short ends horizontally. Never fold up the plank as this will damage its locking profile.

Using the 5G dismantling tool (if available)



Insert the dismantling tool into the gap between the tongue and groove on the short end of the plank. Push it into the short side.



The short side should now be unlocked and the plank can be lifted up and away from adjacent planks. This tool is not needed to separate planks.