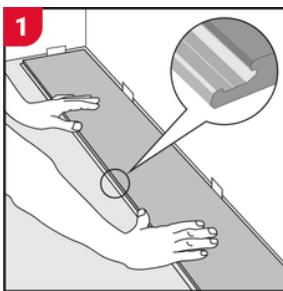


Trailwood Installation Guidelines

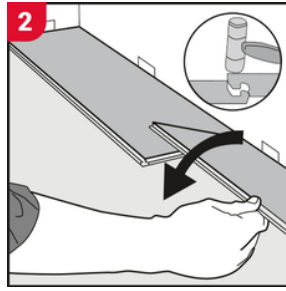
Important Information

- Acclimate flooring for at least 72 hours in the installation room. Do not stack boxes directly on concrete. Do not open cartons during this time.
- Maintain a consistent temperature no lower than 15°C and no higher than 27°C (60-80°F) and a RH of 30% - 55% before, during and after installation.
- Ensure HVAC is running.
- Use 3/8" (10 mm) expansion spacers at all walls and fixed structures. Increase to 1/2" (12 mm) in rooms over 15 m (50 ft).
- Install over a clean, flat, and dry subfloor. Max variation: 3/16" over 10 ft.
- Remove baseboards, thresholds, and undercut door casings where needed.
- Mix planks from multiple boxes to blend color and grain variations.
- Stagger end joints by at least 15-22 inches, depending on plank length.
- Start each row from the same side with the tongue facing the wall.
- Do not install heavy fixtures (e.g., kitchen islands or cabinets) on top of the flooring.
- Inspect all planks during installation. Do not install visibly defective planks - claims will not be accepted once installed.
- In wet areas perimeter sealant is required.

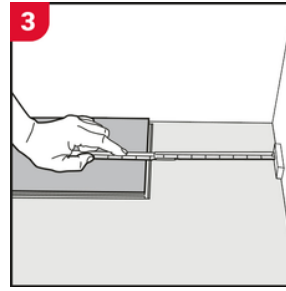
General installation instructions.



1 First row, first plank
Starting from the left-hand corner, place 3/8" spacers against walls on each side and place the first plank with the groove side facing out.



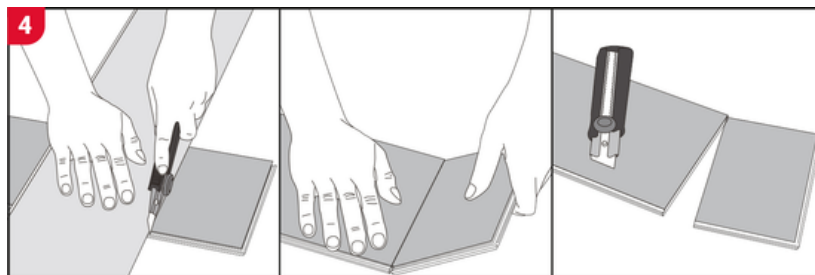
2 First row, Second plank
Starting from the corner closest to the short end of the previous plank, drop the plank down and gently tap with a rubber mallet until it locks into the previous plank.



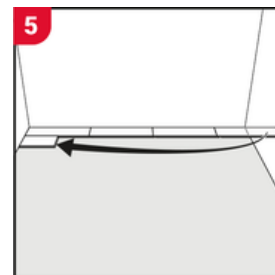
3 End of row
At the end of the first row, place a 3/8" spacer against the wall and measure the length of the last plank to fit. Cut to size and install.

WARNING!

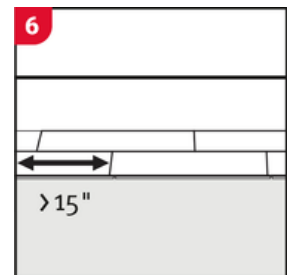
Failure to properly line up the end joints and/or attempting to force them together while out of alignment may result in permanent damage to the end joint.



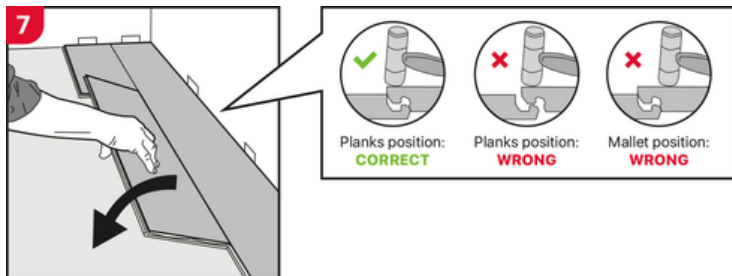
4 Cutting planks to fit
To cut the plank use a utility knife and ruler. With the top side facing up, press down heavily while scoring, cutting deeply several times along the same line. The knife does not need to go through the plank. Then, using one hand to hold down one side, lift up the other side where the plank was cut. The plank will split naturally.



5 Starting the next row
Place 3/8" spacer against the wall and use either the cut part from the last row, or a new plank measuring at least 15" in length.

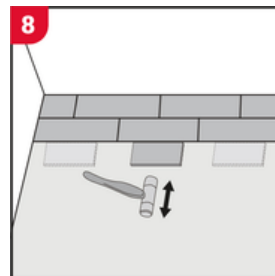


6 Staggering end joints
The minimum distance between plank end joints in parallel rows must be at least 15" for plank lengths of 48" to 60" and 22" for plank lengths greater than 72".

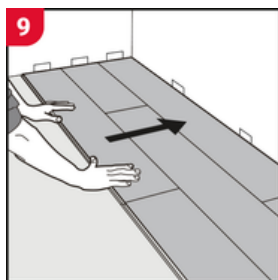


Second row, second plank

Starting from the corner closest to the short end of the previous plank, position the long side of the next plank into the previous row at a 30-degree angle. Drop the plank and gently tap with a rubber mallet until it locks into the previous plank. Ensure that both planks are position correctly. If they are not correctly aligned, follow the plank dismantle instructions and repeat the process.

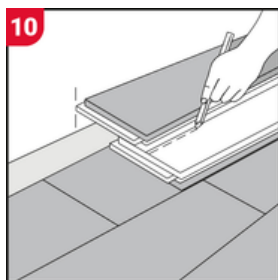


After installing the entire row, use a scrap piece and rubber mallet to gently tap the planks into the previous row to make sure they are tightly locked together and to ensure there are no gaps between the long sides of the planks in any row. *Any gapping between planks can result in failure of the entire installation!*



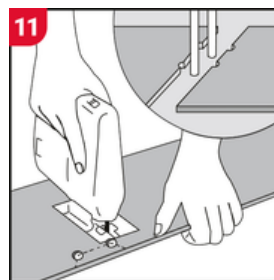
After 2-3 rows

As installation proceeds, check that the installed planks are tightly locked and snug against the $\frac{3}{8}$ " expansion gap spacers on each wall. Remove the spacers once the installation process is complete.



First or last row at uneven walls

The first and last rows may need to be trimmed at uneven walls. Scribe the wall line to the plank row as shown, cut and then continue with installation. The last row plank width must be at least 2" wide.



Installation around radiator/heating pipes

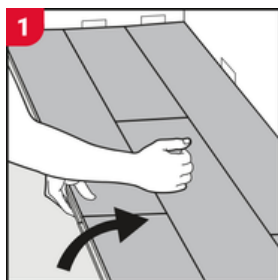
Drill holes two times larger than the diameter of the pipes. Remove a piece of the plank with a utility knife. Position the plank on one side of the pipes and the cut piece on the other side. Glue cut edges together.



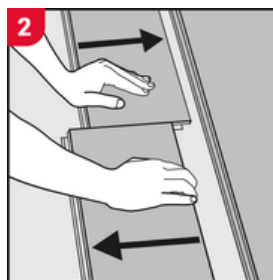
Trimming door and baseboard molding

Position a plank with the decorative side down next to the existing door trim or baseboard molding. Using the height of the plank as a guide, cut to size using a hand saw as shown above.

Dismantling Planks



Drill holes two times larger than the diameter of the pipes. Remove a piece of the plank with a utility knife. Position the plank on one side of the pipes and the cut piece on the other side. Glue cut edges together.



Drill holes two times larger than the diameter of the pipes. Remove a piece of the plank with a utility knife. Position the plank on one side of the pipes and the cut piece on the other side. Glue cut edges together.